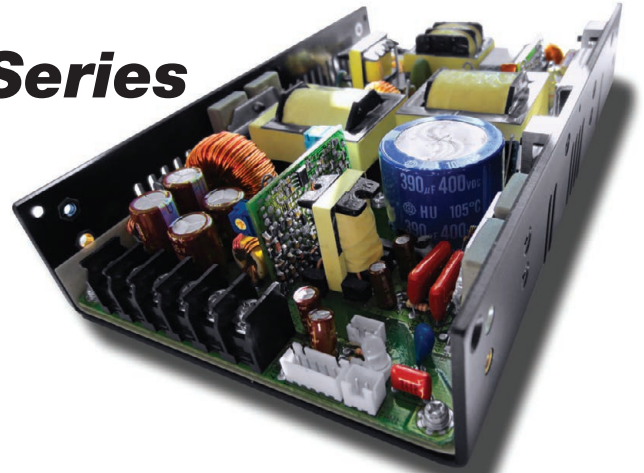


# MPU-400CS Series

## Single Output, 400W Compact, U-Channel AC/DC Power Supplies



### Key Features:

- Compact 400W Supply
  - EN 60950 Approved
- PFC to EN 61000-3-2 "D"
- Low Profile <1U Height
- 700W Peak Power
- Universal 90-264 VAC Input
- Current Share Option

### Electrical Specifications

Specifications typical @ +25°C, nominal input voltage & rated output current, unless otherwise noted. Specifications subject to change without notice.

#### Input

Parameter	Conditions	Min.	Typ.	Max.	Units
Input Voltage Range	Universal	90		264	VAC
Input Frequency		47		63	Hz
Input Current, Full Load	90 VAC		6.35		A
Inrush Current, Cold Start	230 VAC			35	A
Leakage Current				1.5	mA
Power Factor Correction	Meets EN 61000-3-2 Class D				
Input Protection	Two T8A/250V Fuse				
Input Undervoltage Protection	Under 80 VAC ±5 VAC Unit Shuts Down; Unit Recovers Over 86 VAC				

#### Output

Parameter	Conditions	Min.	Typ.	Max.	Units
Output Voltage Adjustment	By Trim Pot, U-Channel Model Only		±5.0		%
Output Regulation, See Note 1			±1.0		%
Hold Time	120 VAC, 80% Load	20			mSec
Ripple & Noise (20 MHz), See Note 2	See Model Selection Guide				
Overload Protection	Foldback Circuit, Autorecovery	110		140	%
Over Voltage Protection	>130% of Rated Output Voltage. Recycle AC Input.				
Over Temperature Protection	Autorecovery		+85		°C
Temperature Coefficient			±0.04		%/°C
Transient Recovery Time, See Note 4	50% Load Change		2.5		mS
Transient Response Deviation			5.0		%
Overshoot/Undershoot	At Turn On/Off			±5.0	%
Turn On Delay	230 VAC			1.0	S
Output Short Circuit	Continuous With Autorecovery				

#### General

Parameter	Conditions	Min.	Typ.	Max.	Units
Isolation Voltage, See Note 5	Input - Output	4,000			VAC
	Input - FG (Frame Ground)	1,500			
	Primary - Core	1,500			
Switching Frequency	Fixed		30		kHz

#### Interface Signals

LED Power Supply On	Bi-color LED Is Green For Power On; Orange When Protection Enabled
AC Fail (Option)	Signal goes low (0V) if input drops below 80 VAC (± 5VAC). Signal goes high (5V) if input rises above 86 VAC
Current Monitor	A 0.5 to 3.0V Output That Represents 0% to 100% Output Current
Current Share (Option)	For Sharing Up To Four Units. Contact The Factory For Details
Margin (Option)	For remote output voltage adjustment. Contact The Factory For Details
Remote Sense	Compensates For Up To A 0.5V Line Drop
Power Good Signal	Goes TTL high 100 to 500 mS after regulation. Goes low at least 1 mS before the loss of regulation.
Remote On/Off	A TTL low signal inhibits the output.

#### Environmental

Parameter	Conditions	Min.	Typ.	Max.	Units
Operating Temperature Range	Ambient	0	+25	+70	°C
Output Derating		2.5%/ °C from +50 °C to + 70 °C			
Storage Temperature Range		-20		+85	°C
Cooling	See Model Selection Guide				
Operating Humidity	RH, Non-condensing			90	%

#### Reliability Specifications

Parameter	Conditions	Min.	Typ.	Max.	Units
MTBF	MIL HDBK 217F, 30°C, Gnd Benign	100			kHours
Safety Standards	EN 60950, UL 60950				
EMI Compliance	Compliance to EN 55022 (CISPR22) Class B; EN 61000-3-2, 3				
EMS Immunity Compliance	EN 61000-4-2,3,4,5,6, 8,11; EN 55024, CE Marked (LVD)				
Vibration	Sinusoidal 5-50 Hz, Acceleration ±7.35 m/s <sup>2</sup> on X, Y & Z Axis				



### MicroPower Direct

292 Page Street  
Suite D  
Stoughton, MA 02072  
USA

T: (781) 344-8226  
F: (781) 344-8481  
E: sales@micropowerelect.com  
W: www.micropowerelect.com



[www.micropowerelect.com](http://www.micropowerelect.com)

Model Number	Output Voltage (VDC)		Output Current (A)		Ripple & Noise (% p-p)	Efficiency (%)
	PreSet	Range	Convection	With 23 CFM		
MPU-400CS-12YZI	12 VDC	12.0 - 15.0	20.83	33.33	±1%	80%
MPU-400CS-24YZI	24 VDC	22.0 - 30.0	10.41	16.66	±1%	80%
MPU-400CS-48YZI	48 VDC	42.0 - 58.0	5.20	8.33	±1%	80%

**Notes:**

- Output regulation includes line & load.
- Ripple & noise is measured from 10 Hz to 20 MHz. Connection to the unit is made with a 0.1 µF ceramic capacitor & a 22 µF electrolytic capacitor connected in parallel.
- A 1% minimum load is required to maintain regulation & ripple specifications.
- Transient recovery is measured to within a 1% error band for a load step change of 50% to 100%.
- Isolation specifications are production HI-Pot tested for 3 seconds.
- The full output range (see table) is covered in the safety agency certification. Standard models are factory set to the Preset voltage, but may be set to other levels within the range without affecting the agency certification. For more information, contact the factory.
- Output power is given for the factory preset voltage. The maximum continuous output power level is 400W with 23 CFM airflow. All models provide a peak power level of 700W for a maximum duration of 500 µs. For more information, contact the factory.
- Each unit includes two (250V/8A) fuses. Since these fuses are not field replaceable, it is recommended that an external fuse of the same size be used on the input of the power supply for protection.

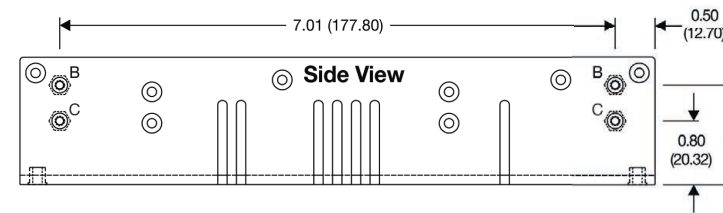
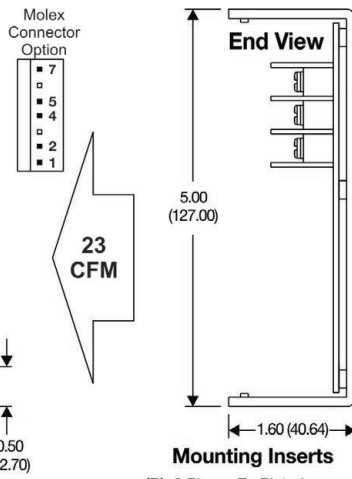
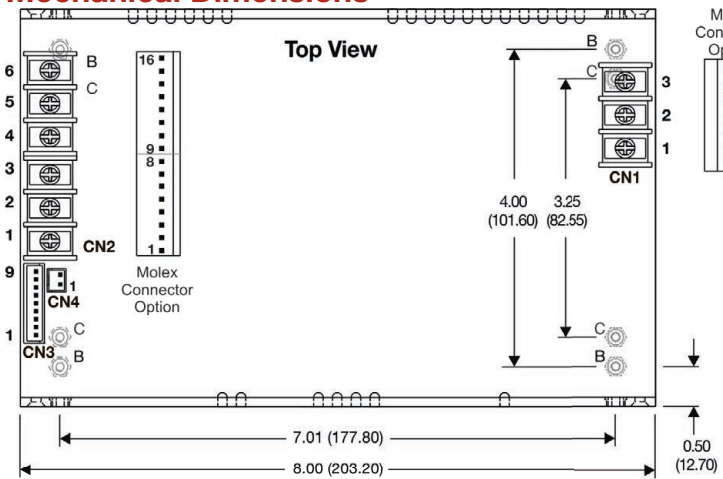
**Model Number**

**MPU-400CS-XXYZI**

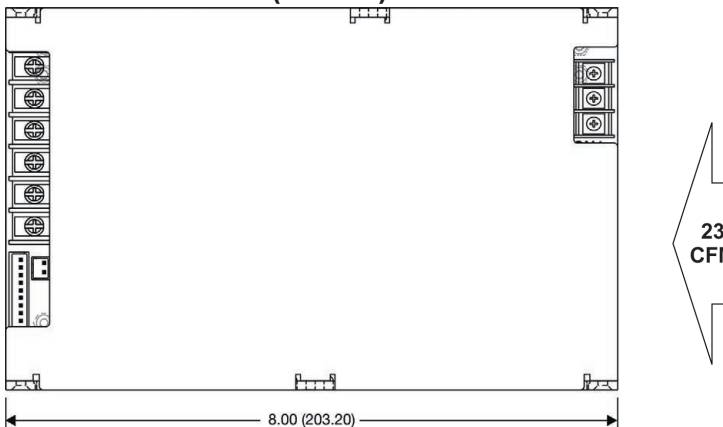
- Mechanical Configuration**  
U = U-Chassis
- Approval Level**  
C (or Blank) = EN 60950
- Outputs**  
S = Single
- Output Voltage Selection**
- Connector Type**  
T = Terminal Block  
A = Molex
- Case Options (If Available)**  
C = Cover
- Current Share (Optional)**  
I = Current Share (up to 4 Units)

Models with other output voltage levels are available (i.e. 5 VDC, 36 VDC, etc)  
Contact the factory for details at:  
[sales@micropowerdirect.com](mailto:sales@micropowerdirect.com)

**Mechanical Dimensions**



**U-Chassis Cover (C Suffix)**



**Connections**

**Input Connector (CN1):**

- Terminal Block: Howder HD-121-3P: M3.5 Screws 3 pins, 9.5 mm Centers
- Molex Mating Part No: Molex 09-91-0700 or equivalent (Seven pins, Five pins used)

Howder		Molex	
Pin	Function	Pin	Function
1	AC-Line	1,2	AC-Line
2	AC-Neutral	4,5	AC-Neutral
3	Field Ground	7	Field Ground

**Output Connector (CN2):**

- Terminal Block: Howder HD-121-6P: M3.5 Screws 6 pins, 9.5 mm Centers
- Molex Mating Part No: Molex 09-91-1600 or equivalent

Howder		Molex	
Pin	Function	Pin	Function
1-3	-VOUT	1-8	-VOUT
4-6	+VOUT	9-16	+VOUT

**Logic Signal Connector (CN3):**

- Mating Part No: JST XHP-9 or equivalent (CHYAO SHIUNN JS-2001-09)

Pin	Function
1	+ Remote Sense
2	- Remote Sense
3	Remote On/Off
4	Power Good
5	AC Fail
6	Common
7	Current Share
8	Current Monitor
9	Margin

**Fan Driver Connector (CN4):**

- Mating Part No: JST XHP-2 or equivalent (CHYAO SHIUNN JS-2001-02)

Pin	Function
1	Plus
2	Minus

**Notes:**

- All dimensions are typical in inches (mm)
- Tolerance x.xx = ±0.02 (±0.50)